

## Circular Connector w. Harax M12 L 3P F

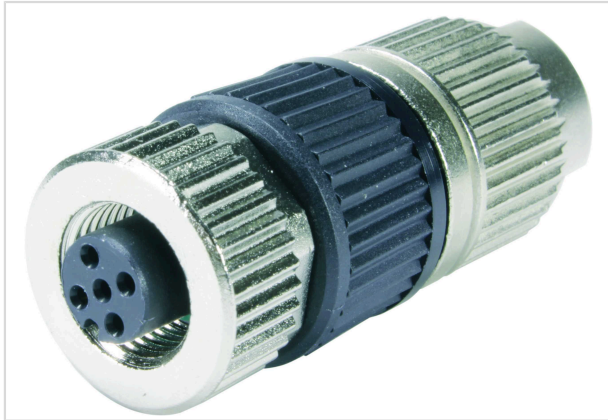


Image is for illustration purposes only. Please refer to product description.

Part number	21 03 212 2306
Specification	Circular Connector w. Harax M12 L 3P F
HARTING eCatalogue	<a href="https://b2b.harting.com/21032122306">https://b2b.harting.com/21032122306</a>

### Identification

Category	Connectors
Series	Circular connectors M12
Identification	M12-L
Element	Cable connector
Specification	Straight Deviating contact configuration

### Version

Termination method	HARAX® connection technology
Gender	Female
Locking type	Screw locking
Shielding	Unshielded
Number of contacts	3
Contact configuration	1, 3, 4
Coding	A-coding

### Technical characteristics

Conductor cross-section	0.34 ... 0.75 mm <sup>2</sup>
Conductor cross-section	AWG 22 ... AWG 18
Wire outer diameter	≤2.6 mm
Rated current	6 A
Rated voltage	50 V
Rated impulse voltage	1.5 kV



Pushing Performance

## Technical characteristics

Pollution degree	3
Insulation resistance	$>10^8 \Omega$
Contact resistance	$\leq 10 \text{ m}\Omega$
Ambient temperature	-40 ... +85 °C
Tightening torque	0.6 Nm
Wrench size (knurled screw / knurled nut)	17
Mating cycles	$\geq 100$
Degree of protection acc. to IEC 60529	IP65 / IP67 when mated
Cable diameter	6 ... 8 mm
Overvoltage category	III
Isolation group	I ( $600 \leq \text{CTI}$ )

## Material properties

Material (insert)	Polyamide (PA)
Material (contacts)	Brass
Surface (contacts)	Gold plated
Material (hood/housing)	Polyamide (PA) Zinc die-cast
RoHS	compliant with exemption
RoHS exemptions	6(c): Copper alloy containing up to 4 % lead by weight
ELV status	compliant with exemption
China RoHS	50
REACH Annex XVII substances	No
REACH ANNEX XIV substances	No
REACH SVHC substances	Yes
REACH SVHC substances	Lead

## Specifications and approvals

Specifications	IEC 61076-2-101
UL / CSA	UL 1977 ECBT2.E102079 CSA-C22.2 No. 182.3 ECBT8.E102079

## Commercial data

Packaging size	1
----------------	---



Pushing Performance

## Commercial data

Net weight	38.8 g
Country of origin	Germany
European customs tariff number	85366990
eCl@ss	27440102 Circular connector (for field assembly)