

Circular Connector w. Harax M12 L 4 F

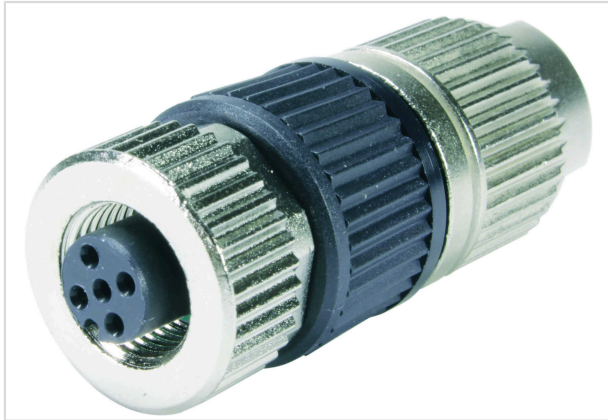


Image is for illustration purposes only. Please refer to product description.

Part number	21 03 212 2305
Specification	Circular Connector w. Harax M12 L 4 F
HARTING eCatalogue	https://b2b.harting.com/21032122305

Identification

Category	Connectors
Series	Circular connectors M12
Identification	M12-L
Element	Cable connector
Specification	Straight

Version

Termination method	HARAX [®] connection technology
Gender	Female
Locking type	Screw locking
Shielding	Unshielded
Number of contacts	4
Coding	A-coding

Technical characteristics

Conductor cross-section	0.34 ... 0.75 mm ²
Conductor cross-section	AWG 22 ... AWG 18
Wire outer diameter	≤2.6 mm
Rated current	6 A
Rated voltage	50 V
Rated impulse voltage	1.5 kV
Pollution degree	3
Insulation resistance	>10 ⁸ Ω



Technical characteristics

Contact resistance	≤10 mΩ
Ambient temperature	-40 ... +85 °C
Tightening torque	0.6 Nm
Wrench size (knurled screw / knurled nut)	17
Mating cycles	≥100
Degree of protection acc. to IEC 60529	IP65 / IP67 when mated
Cable diameter	6 ... 8 mm
Overvoltage category	III
Isolation group	I (600 ≤ CTI)

Material properties

Material (insert)	Polyamide (PA)
Material (contacts)	Brass
Surface (contacts)	Gold plated
Material (hood/housing)	Polyamide (PA) Zinc die-cast
RoHS	compliant with exemption
RoHS exemptions	6(c): Copper alloy containing up to 4 % lead by weight
ELV status	compliant with exemption
China RoHS	50
REACH Annex XVII substances	No
REACH ANNEX XIV substances	No
REACH SVHC substances	Yes
REACH SVHC substances	Lead

Specifications and approvals

Specifications	IEC 61076-2-101
UL / CSA	UL 1977 ECBT2.E102079 CSA-C22.2 No. 182.3 ECBT8.E102079

Commercial data

Packaging size	1
Net weight	39.7 g
Country of origin	Germany
European customs tariff number	85366990



Pushing Performance

Commercial data

eCl@ss

27440102 Circular connector (for field assembly)