

## Han EMC 40 Hood Side Entry M32

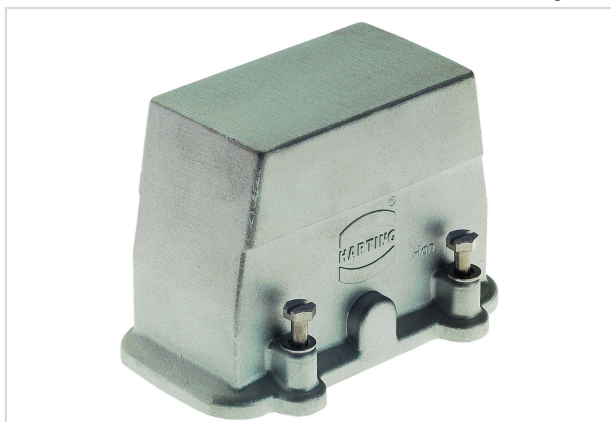


Image is for illustration purposes only. Please refer to product description.

|                    |   |
|--------------------|---|
| Part number        | 19 62 040 0542  |
| Specification      | Han EMC 40 Hood Side Entry M32  |
| HARTING eCatalogue | <a href="https://b2b.harting.com/19620400542">https://b2b.harting.com/19620400542</a> |

### Identification

|                          |                      |
|--------------------------|----------------------|
| Category                 | Hoods/Housings       |
| Series of hoods/housings | Han <sup>®</sup> EMC |
| Type of hood/housing     | Hood                 |

### Version

|                      |  |
|----------------------|--|
| Locking type         | Screw locking                              |
| Size                 | 16 B                                       |
| Version              | Side entry                                 |
| Cable entry          | 1x M32                                     |
| Field of application | Hoods/Housings for higher EMC requirements |

### Technical characteristics

|  |                 |
|--|-----------------|
| Limiting temperature                   | -40 ... +125 °C |
| Degree of protection acc. to IEC 60529 | IP65            |
| Type rating acc. to UL 50 / UL 50E     | 4<br>12         |

### Material properties

|                         |                    |
|-------------------------|--------------------|
| Material (hood/housing) | Aluminium die-cast |
| Surface (hood/housing)  | Uncoated           |
| Colour (hood/housing)   | Unpainted          |
| RoHS                    | compliant          |
| ELV status              | compliant          |



Pushing Performance

## Material properties

|                             |    |
|-----------------------------|----|
| China RoHS                  | e  |
| REACH Annex XVII substances | No |
| REACH ANNEX XIV substances  | No |
| REACH SVHC substances       | No |

## Specifications and approvals

|           |  |
|-----------|--|
| Approvals | DNV GL   |
| UL / CSA  | UL 1977 ECBT2.E235076<br>CSA-C22.2 No. 182.3 ECBT8.E235076 |

## Commercial data

|                                |  |
|--------------------------------|--|
| Packaging size                 | 1  |
| Net weight                     | 290.6 g                                  |
| Country of origin              | Germany                                  |
| European customs tariff number | 85389099                                 |
| eCl@ss                         | 27440202 Shell for industrial connectors |