

Han 24HPR Hood SE M32 Screw Lock

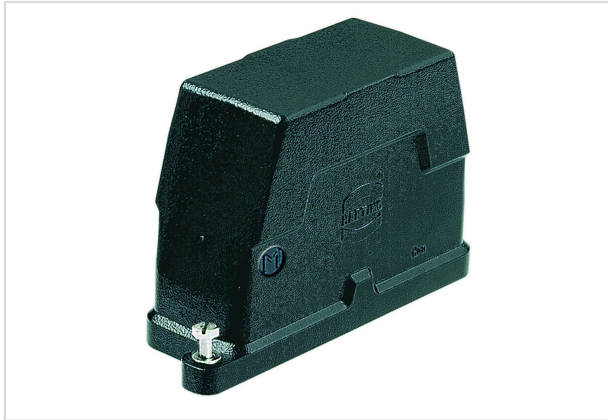


Image is for illustration purposes only. Please refer to product description.

Part number	19 40 024 0512
Specification	Han 24HPR Hood SE M32 Screw Lock
HARTING eCatalogue	https://b2b.harting.com/19400240512

Identification

Category	Hoods/Housings
Series of hoods/housings	Han [®] HPR
Type of hood/housing	Hood

Version

Locking type	Screw locking
Size	24 B
Version	Side entry
Cable entry	1x M32
Field of application	Hoods/housings for harsh outdoor environments

Technical characteristics

Limiting temperature	-40 ... +125 °C
Tightening torque (screw locking)	4 Nm
Degree of protection acc. to IEC 60529	IP65 IP68 IP69 / IPX9K acc. to ISO 20653
Type rating acc. to UL 50 / UL 50E	4 4X 12

Material properties

Material (hood/housing)	Aluminium die-cast Corrosion resistant
Surface (hood/housing)	Powder-coated



Pushing Performance

Material properties

Colour (hood/housing)	RAL 9005 (jet black)
Material (locking)	Stainless steel
RoHS	compliant
ELV status	compliant
China RoHS	e
REACH Annex XVII substances	No
REACH ANNEX XIV substances	No
REACH SVHC substances	No

Specifications and approvals

Approvals	DNV GL
UL / CSA	UL 1977 ECBT2.E235076 CSA-C22.2 No. 182.3 ECBT8.E235076

Commercial data

Packaging size	1
Net weight	662 g
Country of origin	Germany
European customs tariff number	85389099
eCl@ss	27440202 Shell for industrial connectors