

Han 6HvE-asg2-QB-M25

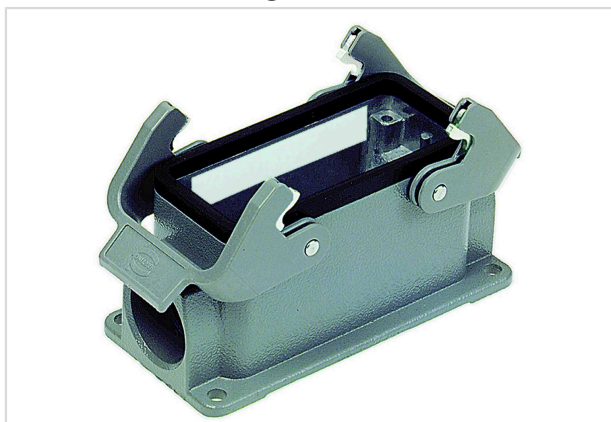


Image is for illustration purposes only. Please refer to product description.

Part number	19 34 006 0271
Specification	Han 6HvE-asg2-QB-M25
HARTING eCatalogue	https://b2b.harting.com/19340060271

Identification

Category	Hoods/Housings
Series of hoods/housings	Han Hv E [®]
Type of hood/housing	Surface mounted housing
Type	Low construction

Version

Locking type	Double locking lever
Han-Easy Lock [®]	Yes
Size	16 B
Version	Side entry
Cable entry	2x M25
Field of application	Special hoods/housings for Han Hv E [®] screw terminal

Technical characteristics

Limiting temperature	-40 ... +125 °C
Degree of protection acc. to IEC 60529	IP65
Type rating acc. to UL 50 / UL 50E	4 4X 12

Material properties

Material (hood/housing)	Aluminium die-cast
Surface (hood/housing)	Powder-coated



Pushing Performance

Material properties

Colour (hood/housing)	RAL 7037 (dust grey)
Material (seal)	NBR
Material (locking)	Polycarbonate (PC) Stainless steel
Colour (locking)	RAL 7037 (dust grey)
Material flammability class acc. to UL 94 (locking levers)	V-0
RoHS	compliant
ELV status	compliant
China RoHS	e
REACH Annex XVII substances	No
REACH ANNEX XIV substances	No
REACH SVHC substances	No

Specifications and approvals

Approvals	DNV GL
-----------	--------

Commercial data

Packaging size	1
Net weight	272.9 g
Country of origin	Germany
European customs tariff number	85389099
eCl@ss	27440202 Shell for industrial connectors