

## SEK-18 SV MA LP ANG45 10P PLS4

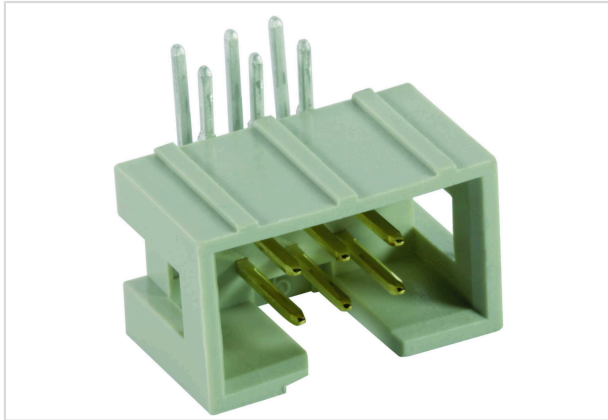


Image is for illustration purposes only. Please refer to product description.

|                    |   |
|--------------------|---|
| Part number        | 09 18 510 5321  |
| Specification      | SEK-18 SV MA LP ANG45 10P PLS4  |
| HARTING eCatalogue | <a href="https://b2b.harting.com/09185105321">https://b2b.harting.com/09185105321</a> |

### Identification

|                            |                 |
|----------------------------|-----------------|
| Category                   | Connectors      |
| Series                     | SEK Low-profile |
| Element                    | Male connector  |
| Description of the contact | Angled          |

### Version

|                    |                            |
|--------------------|----------------------------|
| Termination method | Wave soldering termination |
| Connection type    | PCB to cable               |
| Number of contacts | 10                         |
| Termination length | 4.5 mm                     |
| Performance level  | 1<br>NM 30 (S4)            |

### Technical characteristics

|                                    |                           |
|------------------------------------|---------------------------|
| Contact rows                       | 2                         |
| Contact spacing (termination side) | 2.54 mm                   |
| Rated current                      | 1 A                       |
| Rated voltage                      | 500 V                     |
| Insulation resistance              | $>10^9 \Omega$            |
| Contact resistance                 | $\leq 20 \text{ m}\Omega$ |
| Limiting temperature               | -55 ... +125 °C           |
| Insertion and withdrawal force     | $\leq 20 \text{ N}$       |
| Test voltage $U_{r.m.s.}$          | 1 kV                      |



Pushing Performance

## Technical characteristics

Isolation group IIIa ( $175 \leq \text{CTI} < 400$ )

## Material properties

|   |  |
|---|--|
| Material (insert)                         | Thermoplastic resin (PBT)                                |
| Colour (insert)                           | Grey   |
| Material (contacts)                       | Copper alloy   |
| Surface (contacts)                        | Sn over Ni Termination side<br>Au over Pd/Ni Mating side |
| Material flammability class acc. to UL 94 | V-0  |
| RoHS                                      | compliant with exemption                                 |
| RoHS exemptions                           | 6(c): Copper alloy containing up to 4 % lead by weight   |
| ELV status                                | compliant with exemption                                 |
| China RoHS                                | 50   |
| REACH Annex XVII substances               | No   |
| REACH ANNEX XIV substances                | No   |
| REACH SVHC substances                     | Yes  |
| REACH SVHC substances                     | Lead   |

## Specifications and approvals

|                        |  |
|------------------------|--|
| Specifications         | IEC 60603-13   |
| UL / CSA               | UL 1977 ECBT2.E102079<br>CSA-C22.2 No. 182.3 ECBT8.E102079 |
| Railway classification | F3/I3  |

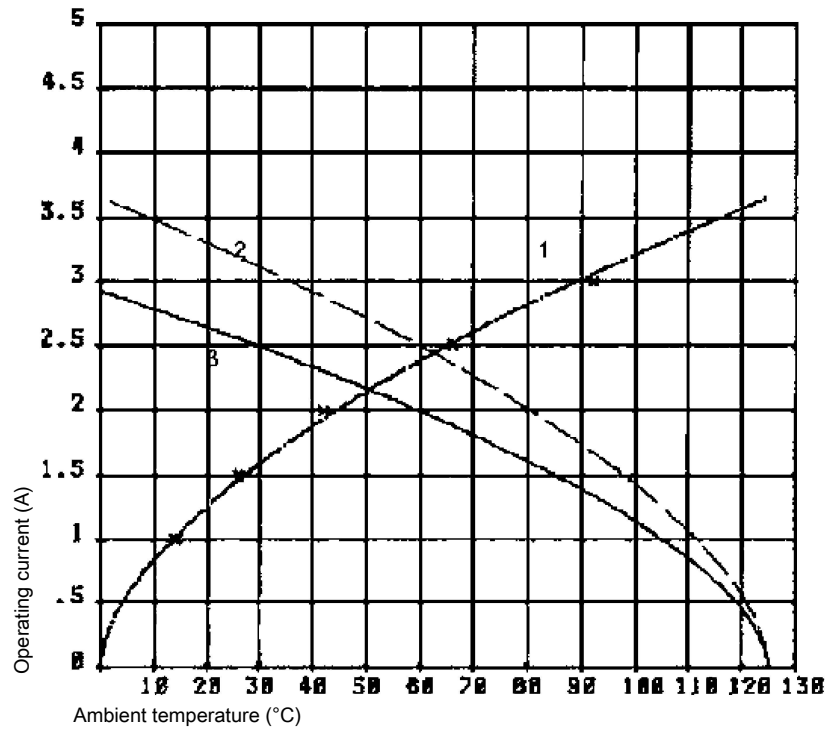
## Commercial data

|                                |                        |
|--------------------------------|------------------------|
| Packaging size                 | 100                    |
| Net weight                     | 1.8 g                  |
| Country of origin              | Switzerland            |
| European customs tariff number | 85366990               |
| eCl@ss                         | 27440402 PCB connector |

### Current carrying capacity

The current carrying capacity of the connectors is limited by the thermal load capability of the contact element material including the connections and the insulating parts. The derating curve is therefore valid for currents which flow constantly (non-intermittent) through each contact element of the connector evenly, without exceeding the allowed maximum temperature.

Measuring and testing techniques acc. to IEC 60512-5-2



- ① Temperature raise
- ② Derating curve
- ③ Derating curve 80%

### Cross section of solder termination

